



Conversion Kit® for Sandvik Jumbo Drills

DD420 / DD320



THE COMPLETE AND SCALABLE SOLUTION

Immersive Technologies provides a custom solution designed to train and develop your mine equipment operators using world leading technologies. This maximizes both effectiveness and throughput of the training process by blending eLearning, Instructor Led Training, Medium and High Fidelity Simulators for the most cost effective solution.

Coupled with this approach are professional integration services, tools and technologies which accurately assess and reduce operator risk. This enables Immersive Technologies to partner with our customers to drive quantifiable improvements in operational metrics such as safety, cost and profitability.

Uncompromising quality delivering impressive results

Immersive Technologies' Advanced Equipment Simulators are recognized globally as the industry standard equipment simulator for the mining and earthmoving industries for their ability to make a significant positive impact to a mine's safety, unscheduled maintenance and production levels.

Our commitment to quality and customer satisfaction has driven the development of a range of simulation products and services specifically designed for a mine's unique operating conditions.

With the ability to accurately measure, assess and enhance an equipment operator's skill levels, the Advanced Equipment Simulator can improve safety and profitability on your site.



Machine dynamics faithfully reproduced to give the maximum realism



Accurate instrumentation and controls provide a safe and highly realistic training environment

Simulation Delivering Safety & Productivity

UJ175 Conversion Kit for Sandvik Jumbo Drills

Immersive Technologies' UJ175 Conversion Kit provides the ultimate in training realism for mines focused on increasing operator safety, improving productivity and reducing levels of unscheduled maintenance.

The Conversion Kit includes a complete replica cab of the Sandvik DD420 / DD320, with fully functional controls and instrumentation sourced directly from Sandvik.

The UJ175 provides accurate and realistic drilling operation with the ability to train with a comprehensive set of operator errors including collaring, hose damage and boom collision.

Full tramming functionality is included and covers connecting to site services, hydraulic jacks and negotiating tight corners.



Complete drill and boom controls



Sliding and rotating seat action



Auxiliary functions



Genuine Sandvik parts



Full tramming capability



Special views and walkaround control



Conversion Kit: UJ175

Released: Jan 2013

NB: Base not included. Specialized sliding & rotating seat included but not pictured.



Drilling Training



Tramming Training



Setting Up



Also included are innovative special views such as an all new 3D Walkaround view that allows the operator to get out of the cabin, line up the booms, view site services connections and inspect the drill.

Post training, operator performance can be reviewed with a 3D graphical view of the holes drilled – compare target to actual and visualize entry angles and errors. All drilling statistics are logged and available for revision in the session summary.

Innovative Simulator Training Software

Immersive Technologies' SimControl software includes a range of specific Sandvik DD420 / DD320 operator errors for recording and measuring incorrect operator behaviours. In addition, the SimControl software includes Sandvik DD420 / DD320 events which allow a trainer to initiate a machine fault or incident to train and assess an operator on how to respond appropriately. This combination of errors and events provide a mechanism to ensure operators are working at maximum efficiency while minimising equipment damage. It also ensures operators are able to avoid or respond correctly to hazards and potentially life threatening scenarios.

Operator training events include:

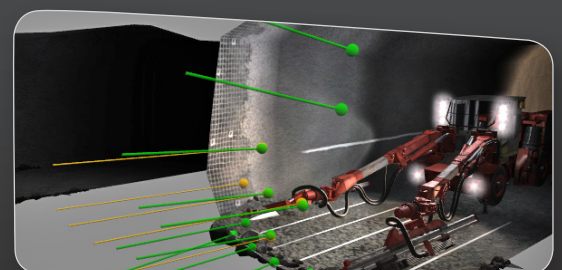
- Engine Fire
- Hose Damage & Boom Collision
- Low Water Pressure
- Hydraulic Oil Temperature

Operator errors include a focus on the following areas:

- Hydraulics Management
- Engine Management
- Preventative Maintenance
- Productivity
- Site Safety Procedures
- Situational Awareness



Connecting to Site Services



3D Session Review of Drill Holes

Simulation Delivering Safety & Productivity

UJ175 Conversion Kit for Sandvik Jumbo Drills



Transforming data to information

SimMetrics™ is a powerful reporting system that helps you review, measure and visualize your simulation data. With an intuitive click-and-drag user interface, you don't need to be a programmer to quickly generate detailed reports on the results of your training.

SimMetrics Benefits:

- Operator and crew benchmarking
- Trending analysis of operator performance
- Early identification of equipment misuse and damage
- Recording of emergency scenario training results
- Enables comparative analysis against site in-pit results.



Support where and when you need it

You purchase the world's best mining simulation to get the job done. Immersive Technologies provides you the support and peace of mind to make sure your simulator achieves this goal.

Our customers receive a range of comprehensive support services:

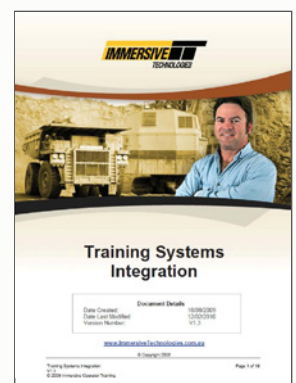
- 24hr phone support
- Rapid emergency visits
- Scheduled on-site service
- Regular maintenance support
- Hardware and software upgrades
- Extended parts warranty
- Best practice training and community networking.

Contact Immersive Technologies today to discuss which of our five year Customer Support Programs best suits your sites' requirements.

Training Systems Integration for Sandvik Jumbo Drills

The success of your simulator training depends largely on the knowledge and application of the technology. Immersive Technologies offers on-site and customized consultation programs to assist mines to rapidly integrate their simulator technology, implement training program best practices and achieve maximum return on investment.

Immersive Technologies application specialists work closely with you to develop a customized Sandvik Jumbo Drill training curriculum, including the development of detailed performance based benchmarks and reporting systems tailored to your site's specific objectives.



Enquiries@ImmersiveTechnologies.com
www.ImmersiveTechnologies.com

© Copyright Immersive Technologies
20140514

IMMERSIVE
TECHNOLOGIES